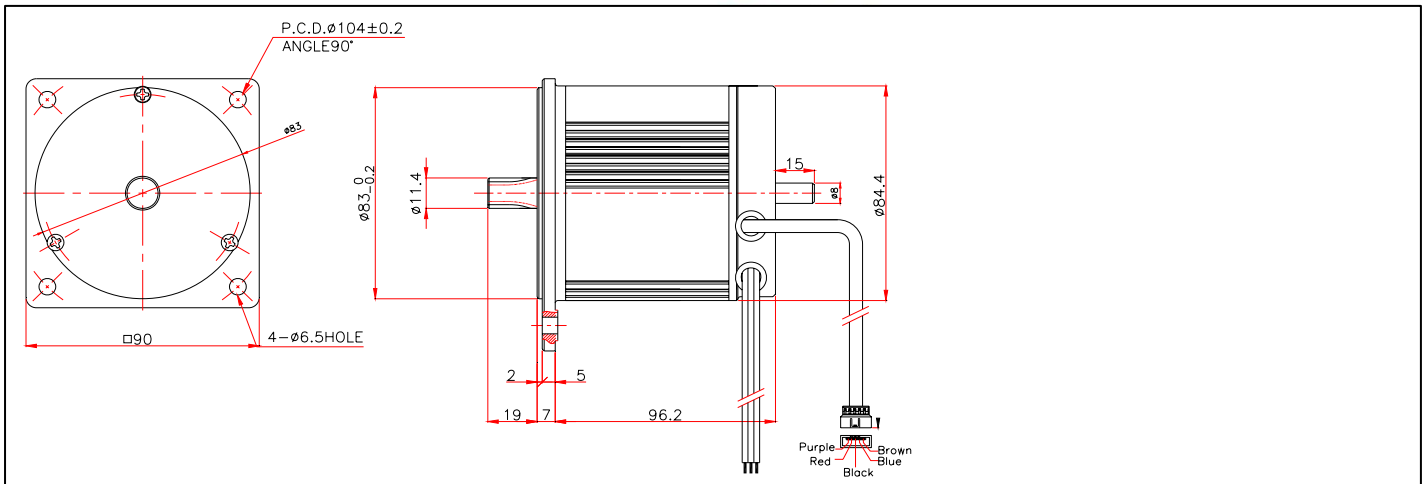


# MPSI BLDC MOTOR

90mm

MMEB-074DAB

## Dimensions



## Specification

| Voltage | No Load |               | Rated Load |                |         | Rotation | Applications  |
|---------|---------|---------------|------------|----------------|---------|----------|---|
| [V DC]  | [A DC]  | [RPM]         | [A DC]     | [RPM]          | [KgfCm] |          |   |
| 24 ~ 27 | 1.4Max  | 3300 $\pm$ 5% | 17.0       | 2,800 $\pm$ 5% | 10.0    | CW / CCW | <ul style="list-style-type: none"> <li>- Electronic Wheelchair</li> <li>- FA ( Geared-Type )</li> </ul> |

| Item                  | Value                           |
|-----------------------|---------------------------------|
| Out Put Power         | 300 [W]                         |
| Efficiency            | 78 [%]<br>( System Efficiency ) |
| Operating Temperature | -20 ~ 60 [°C]                   |
| Insulation Class      | F                               |
|                       |                                 |

| Item         | Value                   |
|--------------|-------------------------|
| Bearing Type | Ball ( 6001ZZ / 608ZZ ) |
| Rating       | Continuous              |
| Weight       | 2.0 [kg]                |
| Drive Type   | Exterior-Type           |
| Drive Model  | 400MF                   |

※ 1. Gear Ratio : 3 ~ 200 : 1

2. Technical Data contained within this document is subject to change without notice