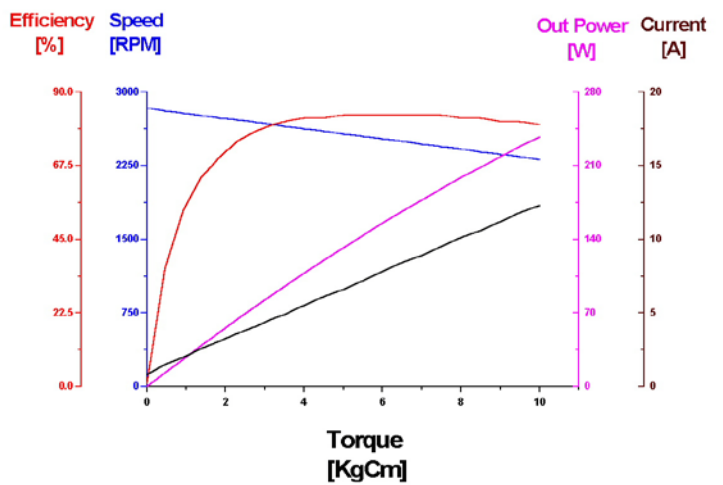
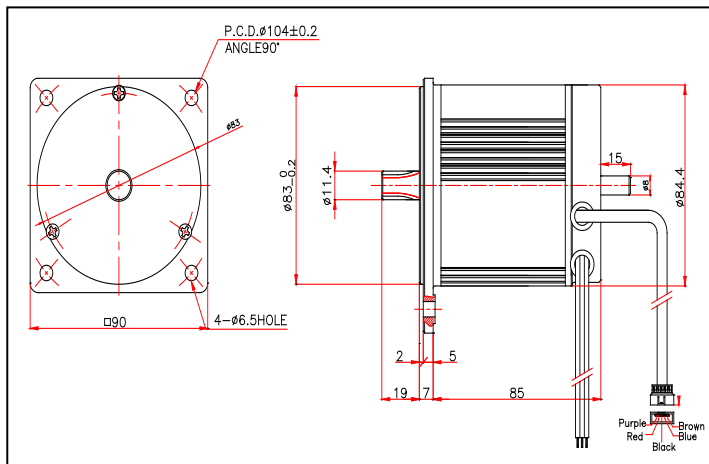


# MPSI BLDC MOTOR

□90mm

MAEB-074CAA

## Dimensions



## Specification

Voltage	No Load		Rated Load			Rotation	Applications
[V DC]	[A DC]	[RPM]	[A DC]	[RPM]	[KgCm]		- Electronic Scooter / Bicycle - Electronic Wheelchair - FA ( Geared-Type )
24 ~ 27	0.9Max	2700 $\pm$ 5%	10.0	2,400 $\pm$ 5%	8.0	CW / CCW	

Item	Value
Out Put Power	200 [W]
Efficiency	81 [%] ( System Efficiency )
Operating Temperature	-20 ~ 60 [°C]
Insulation Class	F

Item	Value
Bearing Type	Ball ( 6001ZZ / 608ZZ )
Rating	Continuous
Weight	1.6 [kg]
Drive Type	Exterior-Type
Drive Model	400MF

※ 1. Gear Ratio : 3 ~ 200 : 1

2. Technical Data contained within this document is subject to change without notice